

# AZ HOMES



**TAMEER**

**19907**



FOR THE MODERN TRAVELLER,  
THE INDEPENDENT TRENDSETTER,  
**AND EVERYTHING IN BETWEEN**



AZ ABOUT TAMEER

Cared to build communities more than structures.  
Since 1954

Homes

TAMEER



## ABOUT TAMEER

TAMEER being the oldest housing development in Egypt's modern history, with over 27,500 units delivered. We have gained experience in building a state of the art communities, creating many of Egypt's most recognizable architectural landmarks.

TAMEER is a company with legacy and passion for people that has been passed down through generations.

Over three generations of workers and residents, from grandfather to son to grandson, we have delivered homes and created connections. As we think about the future, we think about our legacy and our culture.

We think about what makes us different in the market and what principles we want to launch our projects on. Gradually, our thoughts crystalized around one word: **PEOPLE**



OBEROI HOTEL ————— ASWAN



TAMEER HEADQUARTERS  
————— GARDEN CITY



OLD MERIDIAN ————— GARDEN CITY



HELNEN PALESTINE  
————— MONTAZA ALEXANDRIA



HELWAN UNIVERSITY  
————— HELWAN



SHERATON HELIOPOLIS  
————— HELIOPOLIS



NEIGHBORHOOD ————— NEW MAADI

AZ LOCATION

The ultimate prime location. Between New Cairo and the New Capital.

Homes

TAMEER



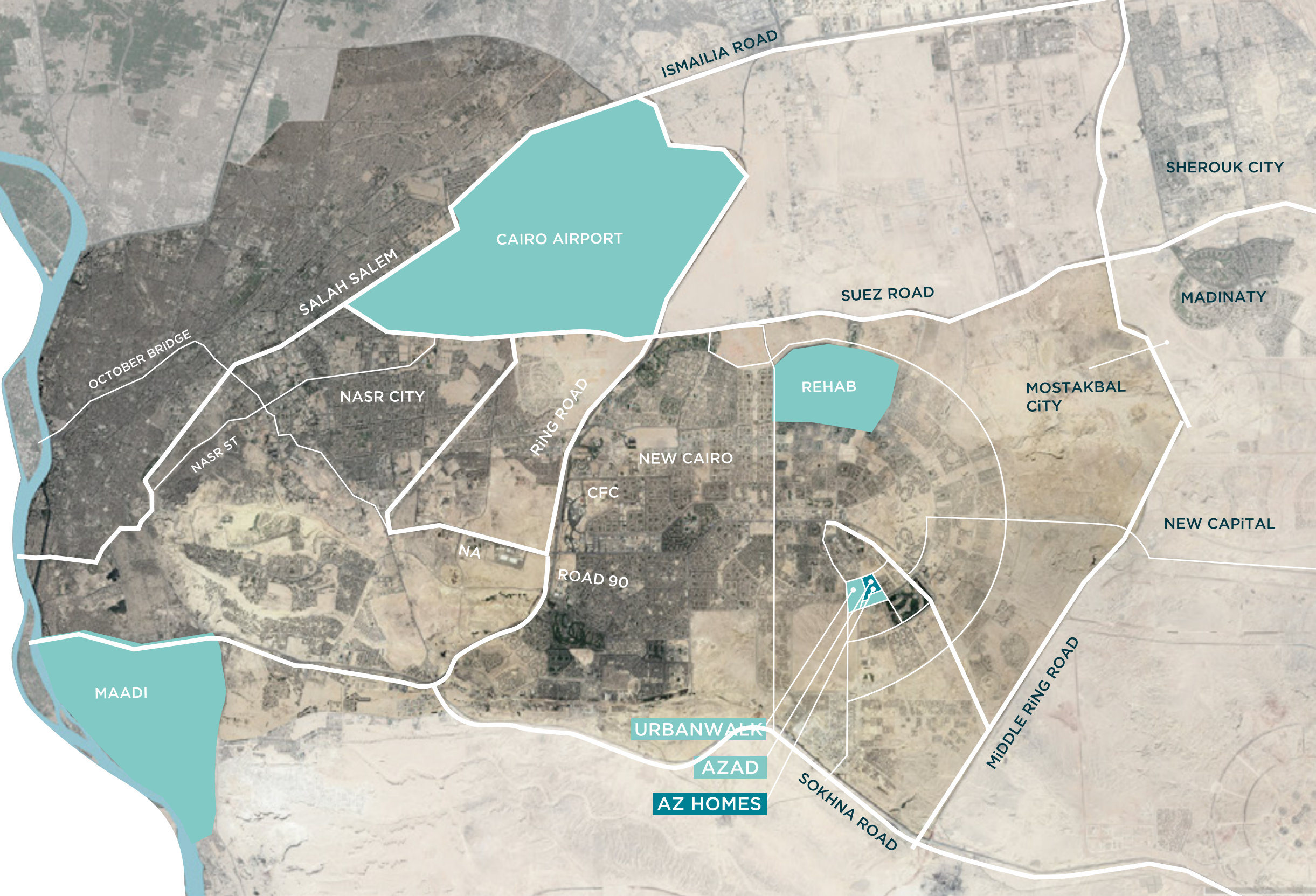
# LOCATION OVERVIEW

30MIN ———  
FROM HELIOPOLIS

20MIN ———  
FROM NEW CAPITAL

30MIN ———  
FROM MAADI

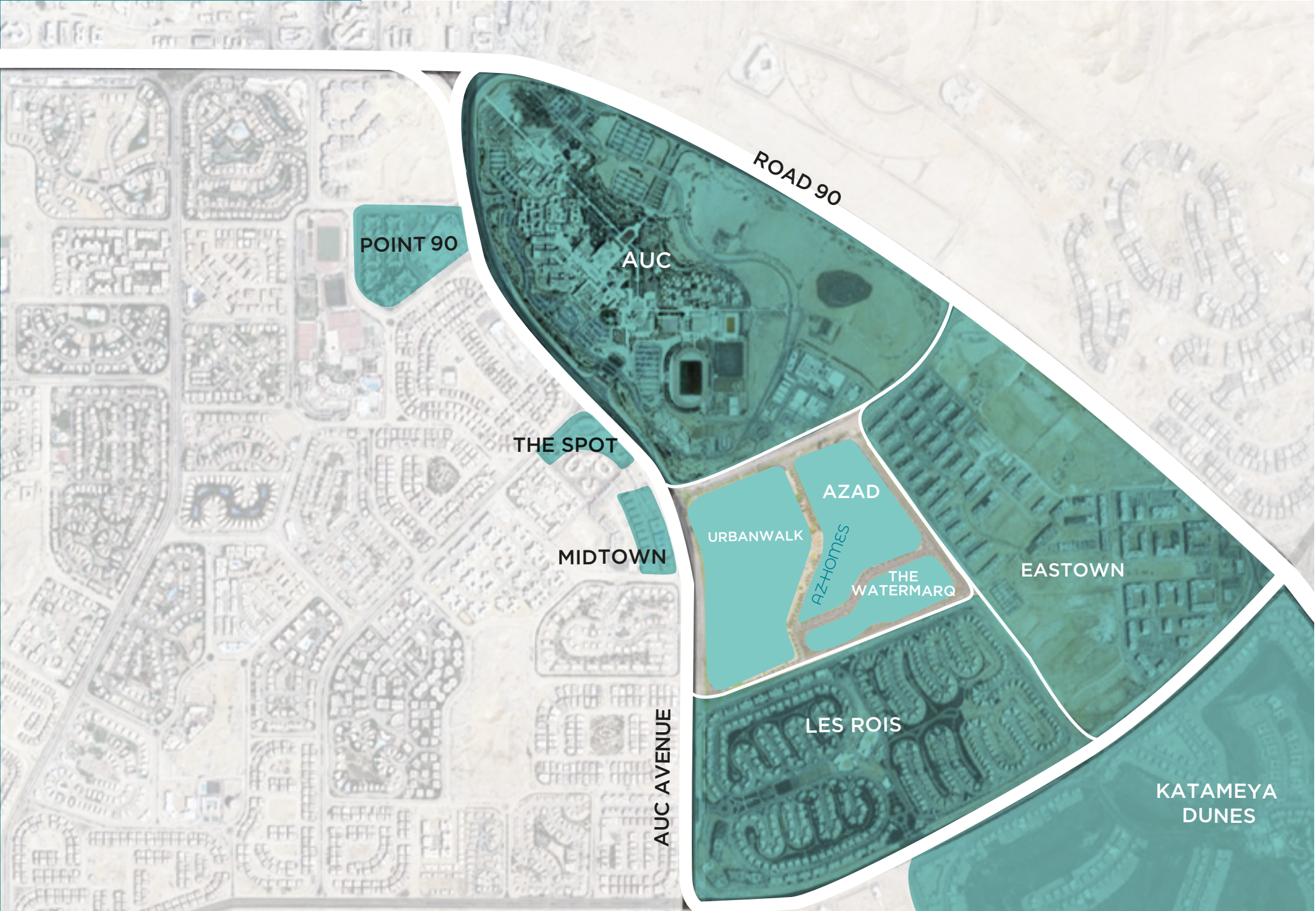
15MIN ———  
FROM CAIRO INTL.AIRPORT





STRATEGICALLY  
LOCATED  
IN THE CENTER  
OF NEW CAIRO

ACROSS THE STREET  
FROM AUC UBL & URBAN WALK





AZ

HOMES

## MASTERPLAN

TAMEER













# ABOUT AZ HOMES

AZ ————— HOMES

TAMEER is introducing AZ Homes, a new one of a kind experience to the market, launching its very own fully finished and semi furnished apartments with panoramic views in every single unit. The new concept of efficient spaces offers state of the art indoor and outdoor amenities that include a rooftop pool, gym, co-working space, a lounge, a cinema room, and a dining hall, all within each building. Studios starting from 52m<sup>2</sup>.





AZ FACILITIES

HOMES

TAMEER

## OUT DOOR FACILITIES

Residents will enjoy an array of services in the compound that include community centre, a pool, a gym, and many more. For those who like the 360 experience AZ Homes has it all. With world class facilities for those who like the outdoors and want to explore outside their own buildings and amenities within these buildings.





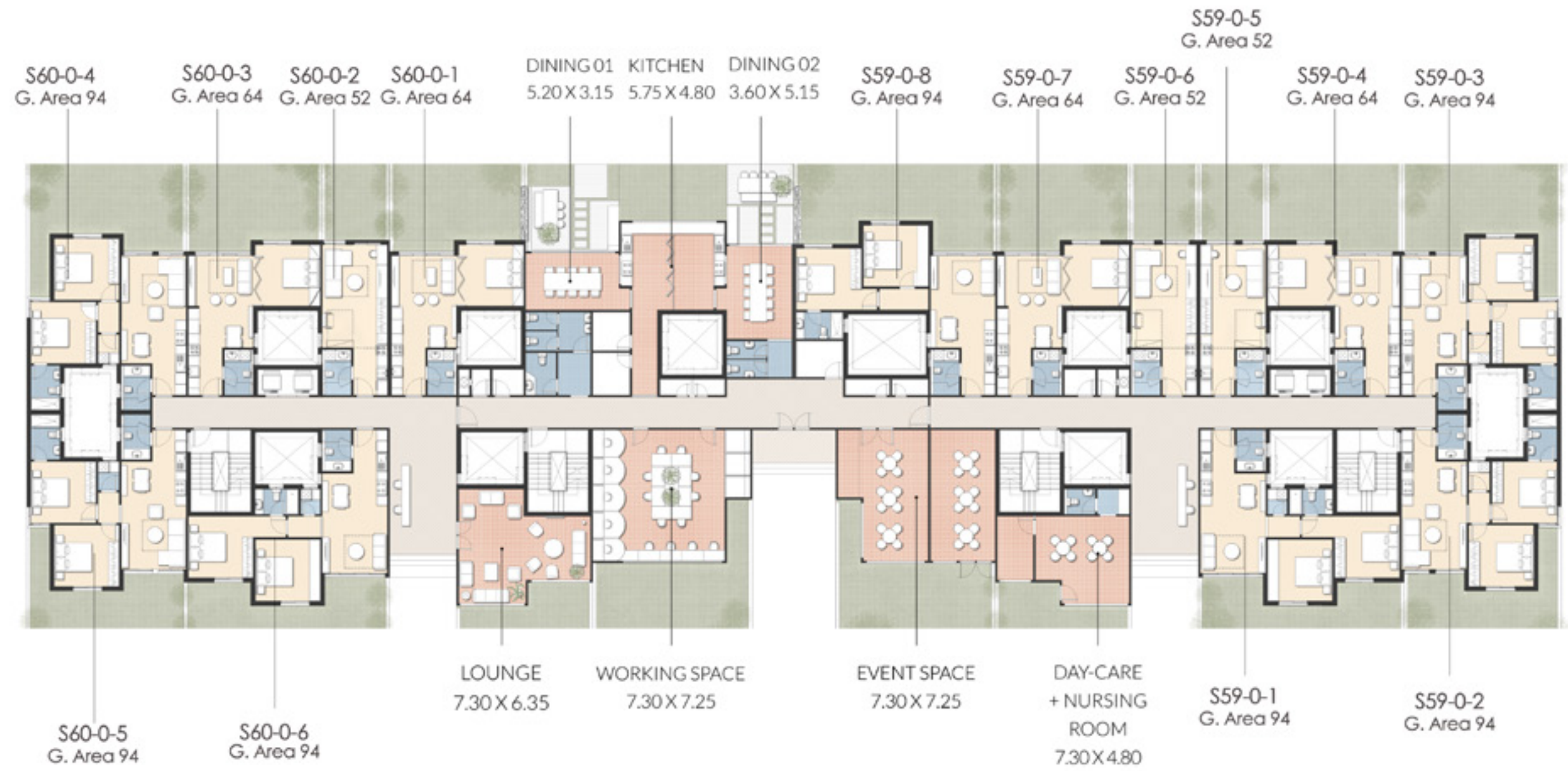
## GROUND FLOOR FACILITIES

AZ Homes brings a new concept of living, here we prioritize your needs at every possible level. Your work from home office just got a whole lot better with our aerodynamic co-working spaces. Bring your healthy lunch or make a snack in our shared kitchen, or enjoy a mental break at one of our lounges. Easily hold conferences or meetings at our spacious event spaces or host a warm and cozy dinner in one of our dining rooms. Flexible work arrangements, meeting rooms and shareable facilities allow for dynamic work environments.





GROUND FLOOR PLAN



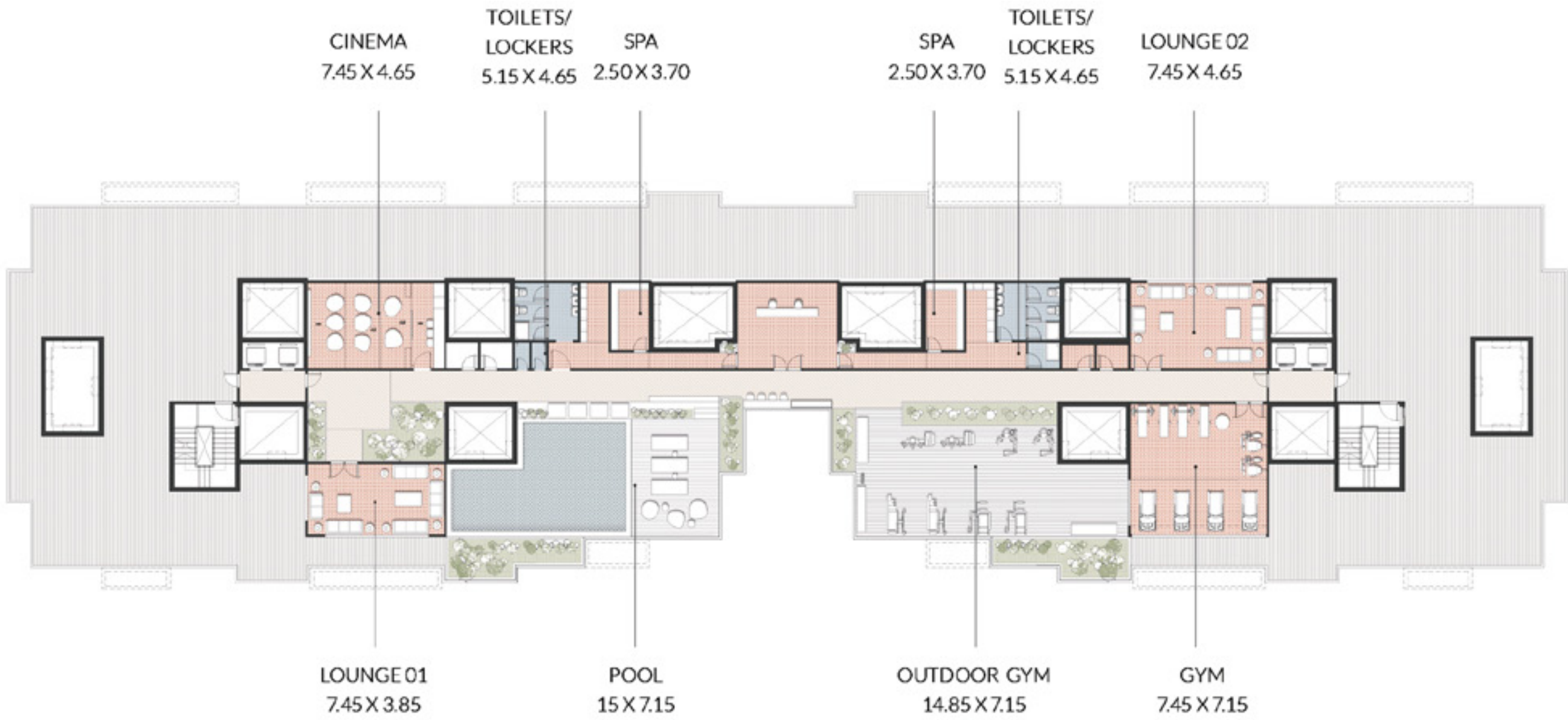


## ROOFTOP FACILITIES

AZ Homes brings a new concept to living, it is all about combining convenience and comfort with efficiency. Bringing you world class facilities and amenities like a fully fledged indoor and outdoor gym including your very own running track, pool and spa, catering to your physical well being. Wind down and indulge in some popcorn at our building's own cinema room. Combining entertainment to fulfill all residents professional and personal needs and wants.



ROOF FLOOR PLAN







AZ

HOMES

## FULLY FINISHED & SEMI FURNISHED

AZ Homes invites comfort in the sleekest way. All of our units are fully finished & semi furnished with advanced technology air purifying AC's for ultimate climate control and also a functioning kitchenette that is space-efficient. AZ Homes goes above and beyond with functional floor plan layouts that encompass a modern essence using contemporary semi furnishing. The flow of these units attract optimum wellness and ease within your home.

TAMEER



AZ FLOORPLANS

HOMES

TAMEER



Studio



## GROUND FLOOR STUDIO 52M

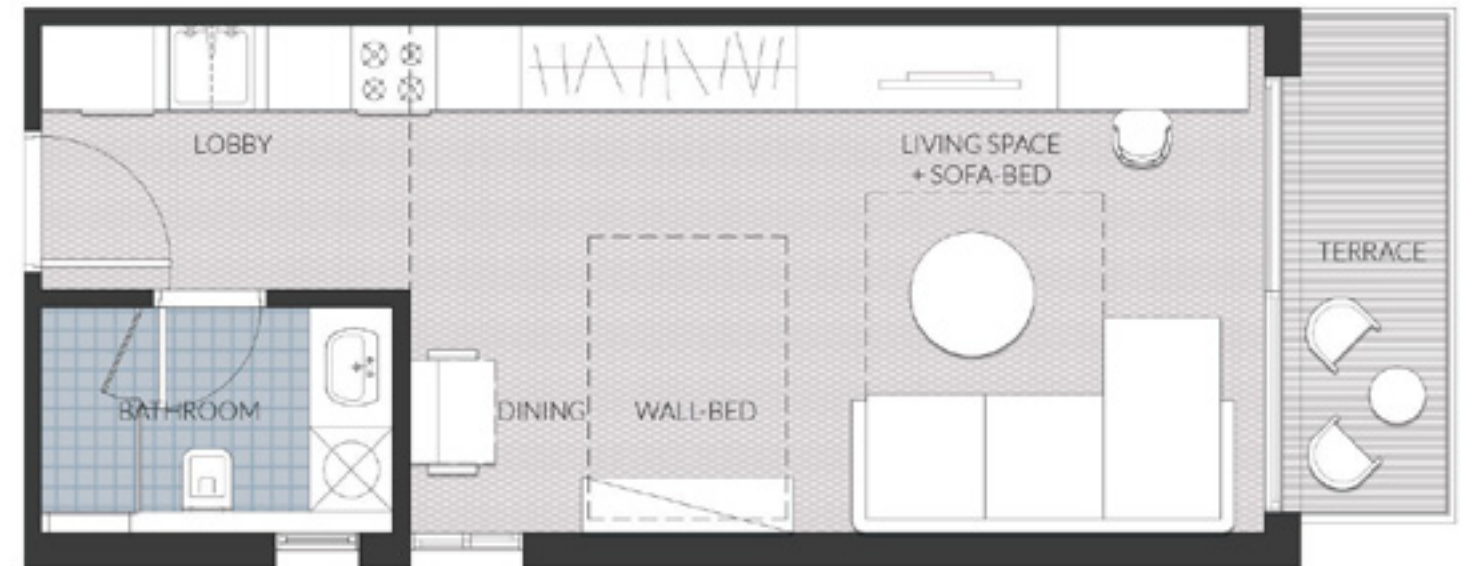
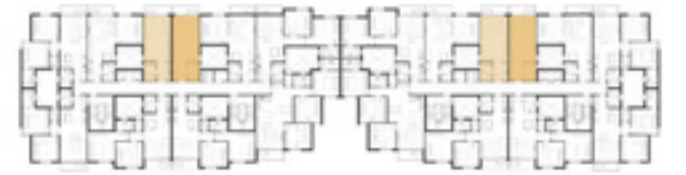
LOBBY	1.90 X 2.60
LIVING/DINING	3.55 X 5.55
BATHROOM	1.55 X 2.50





## TYPICAL FLOOR STUDIO 56M

LOBBY	1.90 X 2.60
LIVING/DINING	3.60 X 6.05
BATHROOM	1.60 X 2.50
TERRACE	3.60 X 1.10





# One Bedroom



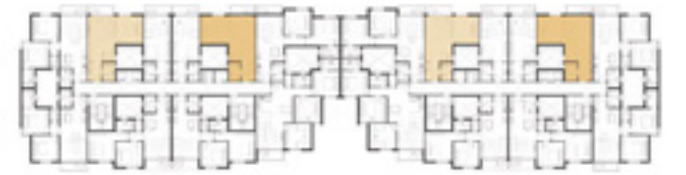
## GROUND FLOOR ONE BEDROOM 64M

LOBBY	1.90 X 2.60
LIVING/DINING	3.55 X 5.00
BATHROOM	1.55 X 2.50
BEDROOM	3.55 X 3.40



## TYPICAL ONE BEDROOM 75M

LOBBY	1.90 X 2.60
LIVING/DINING	3.60 X 6.05
BATHROOM	1.60 X 2.50
TERRACE	3.55 X 1.10
BATHROOM	3.70 X 3.75





# Two Bedrooms





## GROUND FLOOR TWO BEDROOMS 94M

LOBBY 01	1.90 X 1.60
LIVING/DINING	3.55 X 6.00
BATHROOM	1.55 X 2.45
LOBBY 02	1.65 X 1.15
BEDROOM	3.55 X 3.40
MASTER BEDROOM	3.40 X 3.60
MASTER BATHROOM	2.50 X 1.60
LAUNDRY	1.15 X 1.60





GROUND FLOOR TWO BEDROOMS  
94M

LOBBY 01	1.90 X 2.40
LIVING/DINING	3.55 X 5.35
BATHROOM	1.55 X 2.30
LOBBY 02	1.85 X 1.15
BEDROOM	3.60 X 3.40
MASTER BEDROOM	3.60 X 3.40
MASTER BATHROOM	2.30 X 1.35
LAUNDRY	1.35 X 1.10



# GROUND FLOOR TWO BEDROOMS 94M

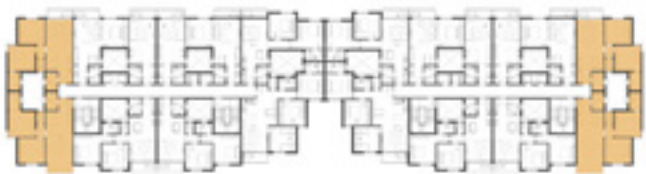
LOBBY 01	1.90 X 2.60
LIVING/DINING	3.55 X 5.00
BATHROOM	1.50 X 2.50
LOBBY 02	1.40 X 1.15
BEDROOM	3.55 X 3.40
MASTER BEDROOM	3.65 X 3.60
MASTER BATHROOM	2.60 X 1.50





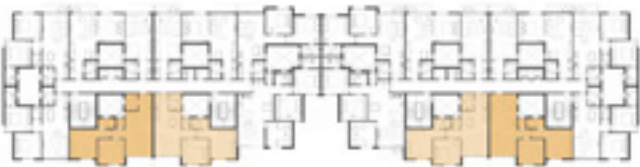
# TYPICAL FLOOR TWO BEDROOMS 99M

LOBBY 01	1.90 X 1.60
LIVING/DINING	3.55 X 6.90
BATHROOM	1.50 X 2.45
LOBBY 02	1.65 X 1.15
BEDROOM	3.55 X 3.40
MASTER BEDROOM	3.40 X 3.60
MASTER BATHROOM	3.50 X 1.60
LAUNDRY	1.15 X 1.60
TERRACE	3.40 X 1.10



# TYPICAL FLOOR TWO BEDROOMS 99M

LOBBY 01	1.90 X 1.60
LIVING/DINING	3.55 X 5.85
BATHROOM	1.55 X 2.30
LOBBY 02	1.85 X 1.15
BEDROOM	3.60 X 3.40
MASTER BEDROOM	3.60 X 3.85
MASTER BATHROOM	3.30 X 1.35
LAUNDRY	1.35 X 1.10
TERRACE	1.40 X 3.40





# TYPICAL FLOOR TWO BEDROOMS 99M

LOBBY 01	1.90 X 2.60
LIVING/DINING	3.55 X 5.90
BATHROOM	1.50 X 2.50
LOBBY 02	2.40 X 1.15
BEDROOM	3.55 X 3.40
MASTER BEDROOM	3.65 X 3.60
MASTER BATHROOM	2.60 X 1.50
TERRACE	3.40 X 1.20



# Three Bedrooms





# TYPICAL FLOOR THREE BEDROOMS 139M

LOBBY	5.30 X 1.15
LIVING/DINING/ KITCHEN	4.90 X 7.10
BATHROOM	2.40 X 1.60
TERRACE	3.45 X 1.25
BEDROOM 01	3.70 X 3.40
BEDROOM 02	3.60 X 3.40
MASTER BEDROOM	3.60 X 3.40
MASTER BATHROOM	2.60 X 1.50
STORAGE/LAUNDRY	1.10 X 1.60





AZ LIVING EXPERIENCE

HOMES

TAMEER











TAMEER

YBA



## GET IN TOUCH

HQ 4 Tawfik Diab Adjacent to The US  
Embassy, Garden City, Cairo. Egypt

Sales Office Azad New Cairo Adjacent to  
The American University in Cairo, Cairo.  
Egypt

[info@tameer.com.eg](mailto:info@tameer.com.eg)  
[www.az-homes.com](http://www.az-homes.com)  
[www.tameer.com.eg](http://www.tameer.com.eg)

19907



AZ HOMES

TAMEER